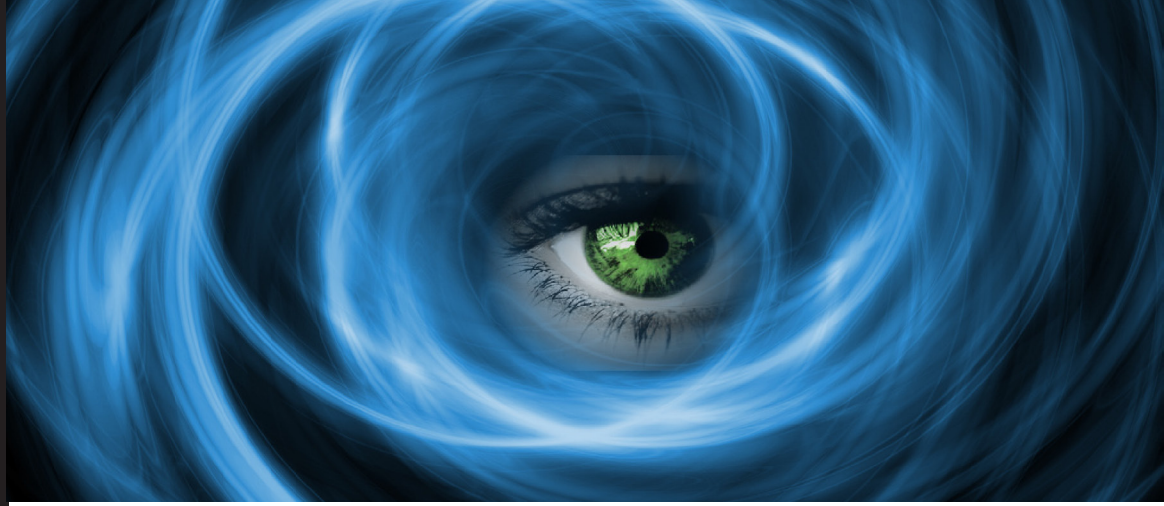




# CAPLUM ACTIVE

ACTIVE DISCOVERY AND MONITORING OF NETWORKS



Caplum Active Discovery module enables Caplum to become an active part of your network with real time detection and monitoring of network configuration and utilisation. Coupling this with the powerful physical cable management in Caplum makes an essential tool for every IT department.

The operational benefits from Caplum active module are that it adds security, allows active traceability, automatically maintains Caplum records and recovers spare port capacity.

This now allows Caplum to assist in keeping the records up to date and stops rogue patching and allows tracking of assets.

One of the immediate pay backs on this module is the recovery of spare ports lost in your network. Spare port recovery can be up to 40% of an established network. The fully installed costs of a managed switch port is circa £15 per port. In a 10,000 port network, if you only made a 10% recovery, it would lead to year one savings of £15,000. Every year after that will have savings due to optimal port usage and informed management of the network.

Caplum Active will manage each switch port and the devices connected to it providing the following features:-

- Track the movement and the removal of VOIP handsets and other devices.
- Automatically detects illegal patches
- Automatically detect and add new switches as they are added to the network.
- Track and report illegal devices being added to the network such as users WiFi.

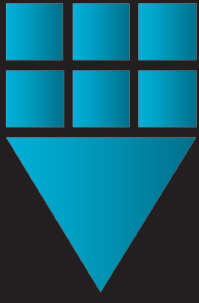
- Report patched circuits that have not been in use for a defined amount of time, allowing the unpatching of unused ports therefore freeing the ports for reuse.
- Helping security by not leaving unused sockets in an active state, making sure that access to your building does not mean access to your network.
- Physical location tracing by IP or MAC address of a device and it's location (room and socket).
- Detects and reports unauthorised devices that have not been previously entered in a white list.
- Real time capacity management ensures you have the capacity prior to VOIP rollouts or bulk moves.
- Assists in the business case to purchase new equipment as you know when your network is "full".
- Dynamic VLAN tracking.
- Circuit trace display information includes the connected devices information.

Network scanning can be performed one to three an hour basis collecting the complete network with minimal bandwidth usage. Each port will give the IP, MAC, DNS name, VLAN and port configuration.

**ARDLIN** SYSTEMS  
**ARDLIN SYSTEMS LTD**

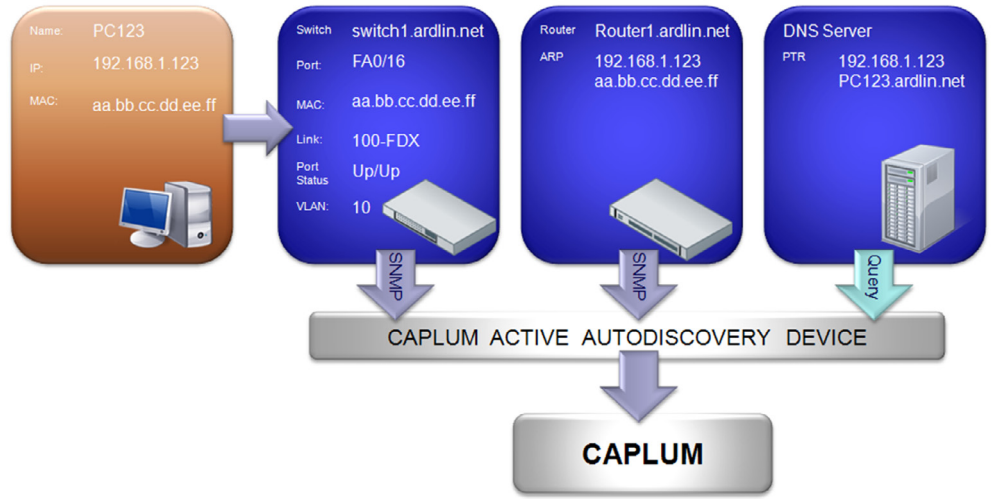
Innovation House  
Molly Millars Close  
Wokingham Berkshire  
RG41 2RX England

Tel +44 (0)118 956 0355  
Fax +44 (0)118 979 9885  
Email Sales@ARDLIN.NET  
Web WWW.ARDLIN.NET



# CAPLUM ACTIVE

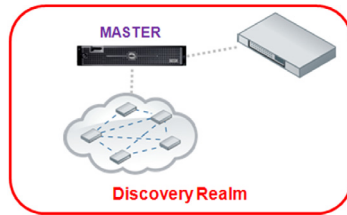
ACTIVE DISCOVERY AND MONITORING OF NETWORKS



Caplum Active scans the network for new switches and also maintains a database of all the switch ports of the existing switches.

The above diagram show where the system obtains what information from. The system never probes a users PC.

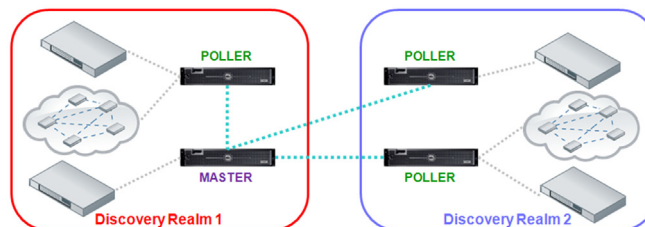
The most common installation of the system is as a single master device in a network.



The Master monitors the ports, searches for new switches and stores the data. Generally a single master will control between 20,000 to 50,000 ports.

For larger networks additional devices called pollers can be deployed. These are slave devices that take over the job of switch discovery and port monitoring, although the master continues to do port monitoring for it's share of the network.

In distributed or very large networks different Discovery Realms may be desirable the topology of this type of deployment is illustrated below.



All discovered data is stored in the master device. Only One Poller in each Discovery Realm discovers switches. Each Poller polls it's assigned switches for end device information.

Polling frequency is just a factor of the number of ports and the number of pollers in that Discovery Realm. One Master licence covers unlimited Pollers so if you wish to up the polling frequency the only cost is the server to run it on.

Extra pollers can be added to the same Discovery Realm or pollers can be place into other Discovery Realms. The flexible distributed architecture is designed for performance and scale

Caplum Active is compatible with all SNMP enable equipment.

## ARDLIN SYSTEMS LTD

Innovation House  
Molly Millars Close  
Wokingham Berkshire  
RG41 2RX England

Tel +44 (0)118 956 0355  
Fax +44 (0)118 979 9885  
Email Sales@ARDLIN.NET  
Web WWW.ARDLIN.NET